

Human Cryopreserved Hepatocytes

Lot number: HUM4055C

Date: November 5, 2015



## Cryo Characterization Report (CCR)

Lot Overview		
Qualification	Catalog Number	Quantity
<i>Cryopreserved human hepatocytes, induction qualified</i>	<i>HUCPI</i>	<i>5.0 x 10<sup>6</sup> viable cells/vial</i>

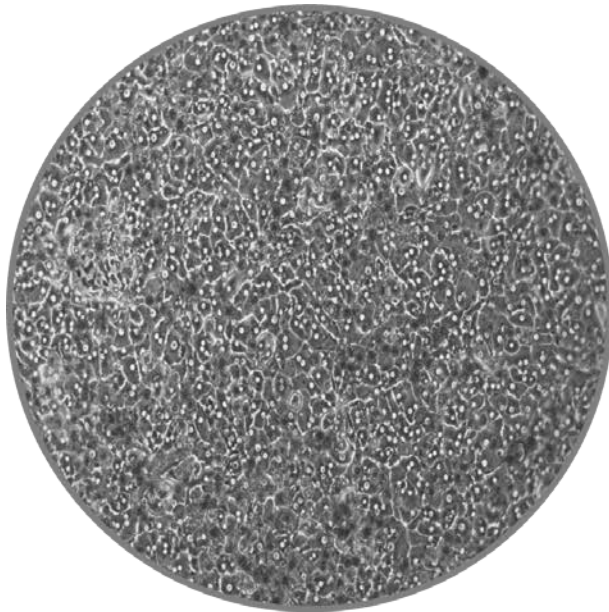
Donor Demographics								
Sex	Race	Age	BMI	Tobacco Use	Alcohol Use	Drug Use	Serological Data	Cause of Death
<i>Female</i>	<i>Caucasian</i>	<i>54</i>	<i>26.2</i>	<i>No</i>	<i>1 wine per day</i>	<i>No</i>	<i>CMV+, EBV+</i>	<i>Stroke</i>

*Additional donor demographic information, including relevant medical and medication history, is available upon request*

Post-thaw Viability and Cell Quality Assessment			
Thawing Medium Used	Centrifuge Conditions	% Viability (post-thaw)	Viable cell yield per vial
<i>Cryopreserved Human Hepatocyte Thawing Medium</i>	<i>100 x g for 8 min</i>	<i>95%</i>	<i>5.0 x 10<sup>6</sup></i>

*HepatoMeter report available upon request*

Monolayer Assessment					
Plating Medium Used	Well Format	Culture Medium Used	Optimal Seeding Density	Initial Attachment Efficiency	Monolayer Confluency after 96hrs in culture
<i>Human Hepatocyte Plating Medium</i>	<i>24-well</i>	<i>Hepatocyte Maintenance Medium</i>	<i>0.8x10<sup>6</sup>/mL</i>	<i>95%</i>	<i>100%</i>



HUM4055C, 24Well with Overlay, 96Hrs, 10X



HUM4055C, 24Well with Overlay, 48Hrs, 10X

Human Cryopreserved Hepatocytes

**Lot number:** HUM4055C

**Date:** November 5, 2015



<i>Suspension Metabolism</i>			
Isoform	Substrate	Marker Metabolite	pmol/min/10 <sup>6</sup> cells
<i>General</i>	<i>100 μM 7-Ethoxycoumarin</i>	<i>7-Hydroxycoumarin</i>	<i>1019.0</i>
<i>SULT</i>	<i>100 μM 7-Hydroxycoumarin</i>	<i>7-Hydroxycoumarin Sulfate</i>	<i>16.1</i>
<i>UGT</i>	<i>100 μM 7-Hydroxycoumarin</i>	<i>7-Hydroxycoumarin Glucuronide</i>	<i>995.0</i>

<i>Induction</i>			
Isoforms	Control Inducer	Fold Induction Specific Activity (72 hours)	Fold Induction mRNA (48 hours)
<i>CYP1A2</i>	<i>50μM Omeprazole</i>	<i>21.8</i>	<i>6.5</i>
<i>CYP2B6</i>	<i>1 mM Phenobarbital</i>	<i>15.3</i>	<i>8.1</i>
<i>CYP3A4</i>	<i>10μM Rifampicin</i>	<i>4.70</i>	<i>12.7</i>

Cryopreserved human hepatocytes were thawed and plated on 24-well collagen I coated plates, overlaid with Matrigel<sup>®</sup>, then dosed in triplicate with vehicle control (0.1% DMSO) or control inducers. The fold induction was calculated by dividing the induced level by the vehicle control level.

Contact customer service to place an order or to obtain additional information on any of our lots. This may include supplementary donor demographic information, current inventory, and photomicrographs at multiple timepoints and magnifications.

**To contact TRL:**

Main: 800-748-8979 or 919-549-3580

Sales: 919-549-3593

Email: [customerservice@trlcells.com](mailto:customerservice@trlcells.com)

Web: [www.triangleresearchlabs.com](http://www.triangleresearchlabs.com)