

## Cryo Characterization Report (CCR)

Lot Overview		
Qualification	Catalog Number	Quantity
Cryopreserved human hepatocytes, plateable	HUCP	$8.5 \times 10^6$ viable cells/vial

Donor Demographics								
Sex	Race	Age	BMI	Tobacco Use	Alcohol Use	Drug Use	Serological Data	Cause of Death
Male	African American	55	28.9	Yes	No	No	Negative	CVA

Additional donor demographic information, including relevant medical and medication history, is available upon request

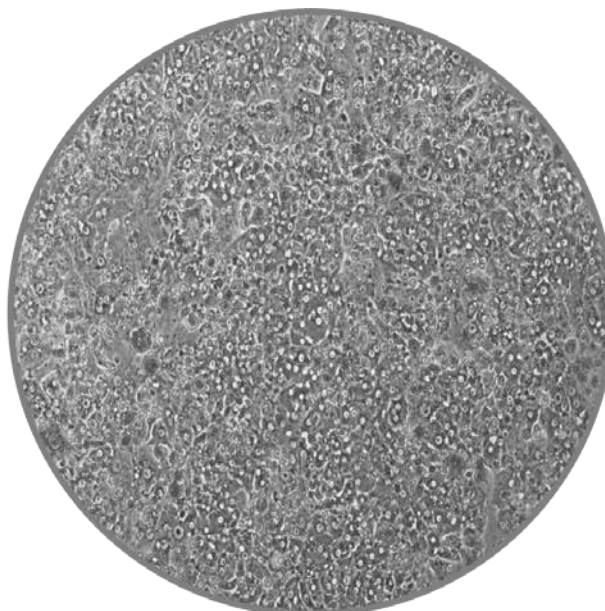
Post-thaw Viability and Cell Quality Assessment			
Thawing Medium Used	Centrifuge Conditions	% Viability (post-thaw)	Viable cell yield per vial
Cryopreserved Human Hepatocyte Thawing Medium	100 x g for 8 min	80%	$8.5 \times 10^6$

HepatoMeter report available upon request

Monolayer Assessment					
Plating Medium Used	Well Format	Culture Medium Used	Optimal Seeding Density	Initial Attachment Efficiency	Monolayer Confluency after 96hrs in culture
Human Hepatocyte Plating Medium	24-well	Hepatocyte Maintenance Medium	$0.8 \times 10^6$ /mL	90%	100%



HUM4056B, 24 hours, 10X



HUM4056B, 72hours, 10X

Human Cryopreserved Hepatocytes

**Lot number:** HUM4056B

**Date:** September 24, 2014



<i>Suspension Metabolism</i>			
Isoform	Substrate	Marker Metabolite	pmol/min/10 <sup>6</sup> cells
<i>General</i>	<i>100 μM 7-Ethoxycoumarin</i>	<i>7-Hydroxycoumarin</i>	<i>478.7</i>
<i>SULT</i>	<i>100 μM 7-Hydroxycoumarin</i>	<i>7-Hydroxycoumarin Sulfate</i>	<i>5.3</i>
<i>UGT</i>	<i>100 μM 7-Hydroxycoumarin</i>	<i>7-Hydroxycoumarin Glucuronide</i>	<i>1208.0</i>

<i>Induction</i>			
Isoforms	Control Inducer	Fold Induction Specific Activity (72 hours)	Fold Induction mRNA (48 hours)
<i>CYP1A2</i>	<i>50μM Omeprazole</i>	<i>N/A</i>	<i>19.6</i>
<i>CYP2B6</i>	<i>1 mM Phenobarbital</i>	<i>N/A</i>	<i>13.5</i>
<i>CYP3A4</i>	<i>10μM Rifampicin</i>	<i>N/A</i>	<i>58.0</i>

Contact customer service to place an order or to obtain additional information on any of our lots. This may include supplementary donor demographic information, current inventory, and photomicrographs at multiple timepoints and magnifications.

**To contact TRL:**

Main: 800-748-8979 or 919-549-3580

Sales: 919-549-3593

Email: [customerservice@trlcells.com](mailto:customerservice@trlcells.com)

Web: [www.triangleresearchlabs.com](http://www.triangleresearchlabs.com)