

Human Cryopreserved Hepatocytes

Lot number: HUM4070B

Date (D/M/Y): 09/05/2017

**Lonza**

Triangle Research Labs – Now Part of Lonza

Cryo Characterization Report (CCR)

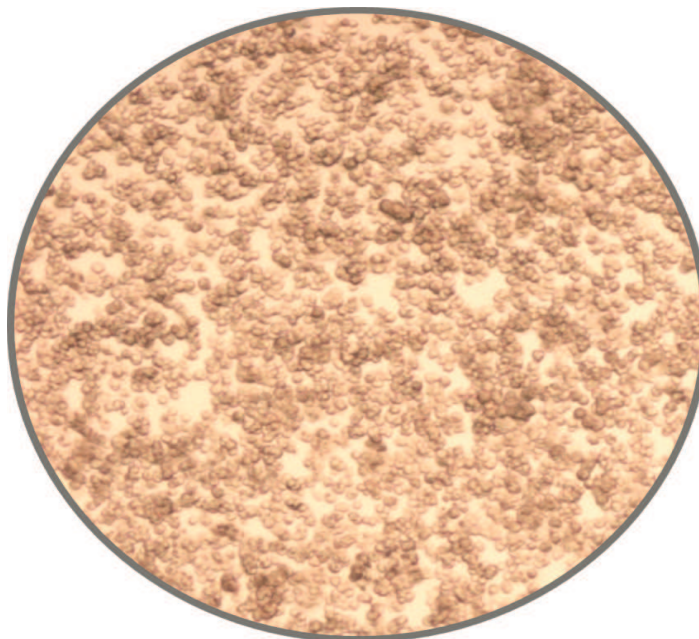
Lot Overview		
Qualification	Catalog Number	Manufacture Date (D/M/Y)
<i>Cryopreserved human hepatocytes, Suspension</i>	<i>HUCSD</i>	<i>07-03-2014</i>

Storage Conditions: <-150°C

Donor Demographics								
Sex	Race	Age	BMI	Tobacco Use	Heavy Alcohol Use	Drug Use	Serological Data	Cause of Death
<i>Female</i>	<i>Caucasian</i>	<i>22 yrs</i>	<i>23.4</i>	<i>No</i>	<i>No</i>	<i>No</i>	<i>Negative</i>	<i>Pneumonia</i>

Additional donor demographic information, including relevant medical and medication history, is available upon request

Post-thaw Viability and Cell Quality Assessment			
Thawing Medium Used	Optimal Centrifuge Conditions	% Viability (post-thaw)	Viable cell yield per vial
<i>MCHT50</i>	<i>100 g x 8 minutes</i>	<i>83</i>	<i>7.2 x 10⁶</i>



HUM4070B, Post-Thaw, 5X

<i>Suspension Metabolism</i>			
Isoform	Substrate	Marker Metabolite/ *Substrate Clearance	Activity (pmol/min/10 ⁶ cells)
<i>GENERAL</i>	<i>100 μM 7-Ethoxycoumarin</i>	<i>7-Ethoxycoumarin Clearance*</i>	<i>NA</i>
<i>GENERAL</i>	<i>100 μM 7-Ethoxycoumarin</i>	<i>7-Hydroxycoumarin</i>	<i>19.0</i>
<i>SULT</i>	<i>100 μM 7-Hydroxycoumarin</i>	<i>7-Hydroxycoumarin Sulfate</i>	<i>13.5</i>
<i>UGT</i>	<i>100 μM 7-Hydroxycoumarin</i>	<i>7-Hydroxycoumarin Glucuronide</i>	<i>670.7</i>

Media products used for characterization:

MCHT50 - Cryopreserved human hepatocyte thawing medium, 50mL

MCHT50P - Cryopreserved pooled human hepatocyte thawing medium, 50mL

Contact customer service to place an order or to obtain additional information on any of our lots. This may include supplementary donor demographic information, current inventory, and photomicrographs at multiple timepoints and magnifications.

To contact Lonza:

Customer Service: +1 800-638-8174 | order.us@lonza.com

Scientific Support: +1 800-521-0390 | scientific.support@lonza.com | Web: www.lonza.com

EU/Row Scientific Support: +32 87 321 611 | scientific.support.eu@lonza.com;

Lonza.com/TRLheps