

Cryo Characterization Report (CCR)

Lot Overview		
Lot Number	Qualification	Catalog Number
HUM4097B	Cryopreserved human hepatocytes Plateable, induction qualified	HUCPI

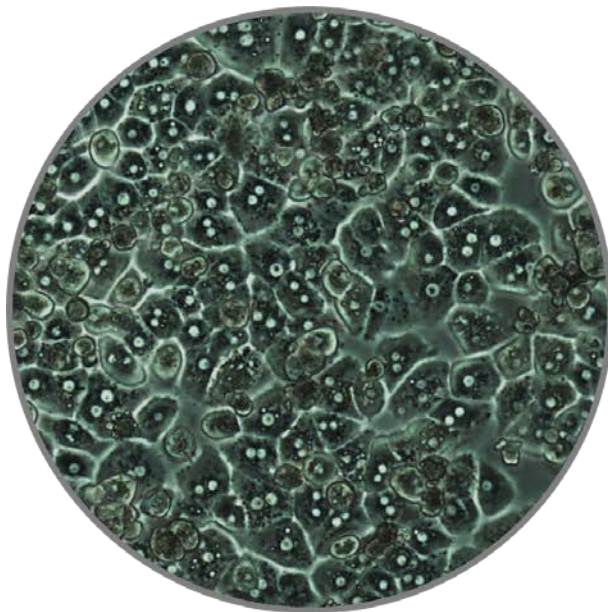
Donor Demographics								
Sex	Race	Age	BMI	Tobacco Use	Alcohol Use	Drug Use	HIV, HBV, HCV Serologies	Cause of Death
Female	Caucasian	53	35	No	Yes	No	Negative	Anoxia

Additional donor demographic information, including relevant medical and medication history, is available upon request

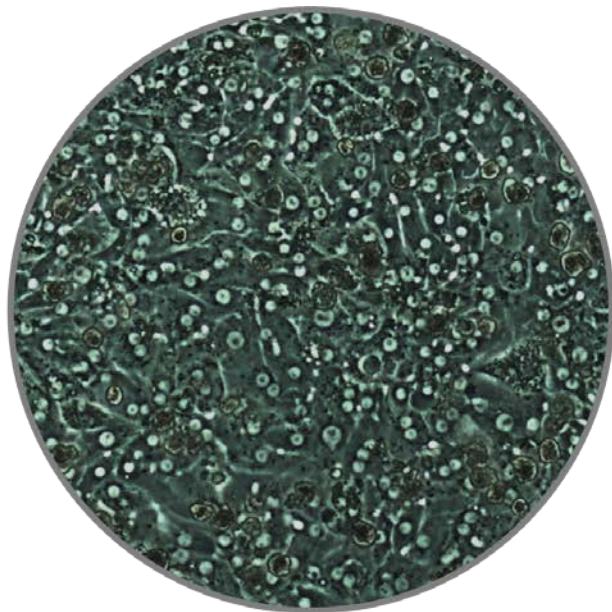
Post-thaw Viability and Cell Quality Assessment			
Thawing Medium Used	Centrifuge Conditions	% Viability (post-thaw)	Viable cell yield per vial
Cryopreserved Human Hepatocyte Thawing Medium	100 x g for 8 min	94%	5.0 x 10 ⁶ viable cells

Monolayer Assessment					
Plating Medium Used	Culture Medium Used	Optimal Seeding Density	Initial Attachment Efficiency	Monolayer Confluency after 72hrs in culture	Duration of Healthy Culture
Human Hepatocyte Plating Medium	Hepatocyte Maintenance Medium	0.8 X 10 ⁶ /mL	95%	100%	120hrs

Characterization was completed in a 24-well collagen-coated plate with extra-cellular matrix overlay



HUM4097B, 24hrs, 10X



HUM4097B, 72hrs, 10X

Cryo Characterization Report (CCR)



<i>Induction</i>			
Isoforms	Control Inducer	Fold Induction Specific Activity (72 hours)	Fold Induction mRNA (48 hours)
<i>CYP1A2</i>	<i>50µM Omeprazole</i>	<i>86.4</i>	<i>29.5</i>
<i>CYP2B6</i>	<i>1 mM Phenobarbital</i>	<i>6.00</i>	<i>5.40</i>
<i>CYP3A4</i>	<i>10µM Rifampicin</i>	<i>16.2</i>	<i>11.4</i>

Cryopreserved human hepatocytes were thawed and plated on 24-well collagen I coated plates, overlaid with Matrigel[®], then dosed in triplicate with vehicle control (0.1% DMSO) or control inducers. The fold induction was calculated by dividing the induced level by the vehicle control level.

Media products used for characterization:

MCHT50 –Cryopreserved human hepatocyte thawing medium, 50mL

MP250 – Human hepatocyte plating medium, 250mL

MM250 – Hepatocyte maintenance medium, 250mL

Contact customer service to place an order or to obtain additional information on any of our cryopreserved primary hepatocyte lots.

To contact TRL:

Phone: 919-549-3593

Email: customerservice@trlcells.com

Web: www.triangleresearchlabs.com