

Human Cryopreserved Hepatocytes  
 Lot number: HUM4105A  
 Date: 11/16/15



## Cryo Characterization Report (CCR)

Qualification		Catalog Number
Cryopreserved human hepatocytes, Induction		HUCPI

Storage Conditions: <150°C

Sex	Race	Age	BMI	Tobacco Use	Alcohol Use	Drug Use	Serological Data	Cause of Death
Male	Caucasian	45 yrs	24.2	No	Yes	Yes	Negative	Anoxia

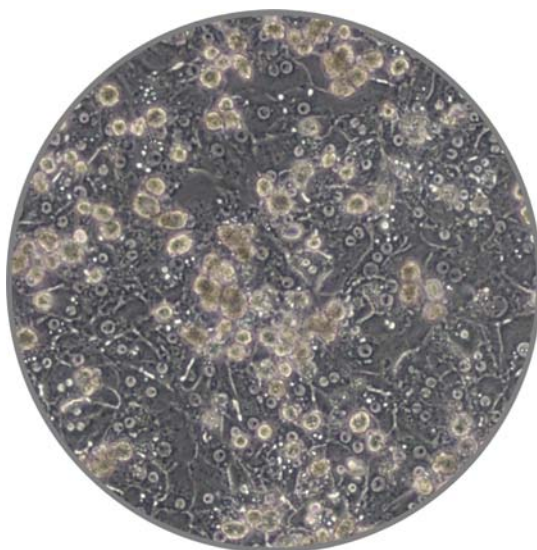
Additional donor demographic information, including relevant medical and medication history, is available upon request

Thawing Medium Used	Optimal Centrifuge Conditions	% Viability (post-thaw)	Viable cell yield per vial
MCHT50	100 g x 8 minutes	91%	8.0 x 10 <sup>6</sup>

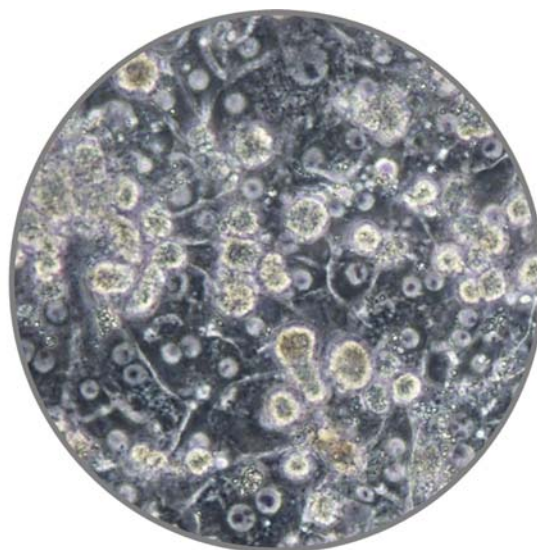
HepatoMeter report available upon request

Plating Medium Used	Well Format	Culture Medium Used	Optimal Seeding Density	Initial Attachment Efficiency	Monolayer Confluency @96hrs
MP250	24 well	MM250	0.8x10 <sup>6</sup> /mL	90%	100%

Characterization was completed in a 24-well collagen-coated plate with extra-cellular matrix overlay



HUM4105A, 72hrs, 10X



HUM4105A, 96hrs, 20X

<i>Induction</i>			
Isoforms	Control Inducer	Fold Induction Specific Activity	Fold Induction mRNA Expression
<i>CYP1A2</i>	<i>50µM Omeprazole</i>	<i>19.4</i>	<i>62.5</i>
<i>CYP2B6</i>	<i>1mM Phenobarbital</i>	<i>5.0</i>	<i>29.0</i>
<i>CYP3A4</i>	<i>10µM Rifampicin</i>	<i>37.0</i>	<i>16.3</i>

Cryopressed human hepatocytes were thawed and plated on 24-well collagen I coated plates, overlaid with Matrigel®, then dosed in triplicate with vehicle control (0.1% DMSO) or control inducers for 72 hours. The fold induction was calculated by dividing the induced level by the vehicle control level.

Media products used for characterization:

MCHT50 - Cryopreserved human hepatocyte thawing medium, 50mL

MM250 - Hepatocyte maintenance medium, 250mL

MP250 - Human hepatocyte plating medium, 250mL

Contact customer service to place an order or to obtain additional information on any of our lots. This may include supplementary donor demographic information, current inventory, and photomicrographs at multiple timepoints and magnifications.

To contact TRL:

Main: 800-748-8979 or 919-549-3580

Sales: 919-549-3593

Email: [customerservice@trlcells.com](mailto:customerservice@trlcells.com)

Web: [www.triangleresearchlabs.com](http://www.triangleresearchlabs.com)