

Human Cryopreserved Hepatocytes  
 Lot number: HUM4111B  
 Date: 10/28/15



## Cryo Characterization Report (CCR)

Lot Overview	
Qualification	Catalog Number
Cryopreserved human hepatocytes, Induction	HUCPI

Storage Conditions: <150°C

Donor Demographics								
Sex	Race	Age	BMI	Tobacco Use	Alcohol Use	Drug Use	Serological Data	Cause of Death
Male	Caucasian	27	31.6	Yes	Yes	Unknown	Negative	Heroin Overdose

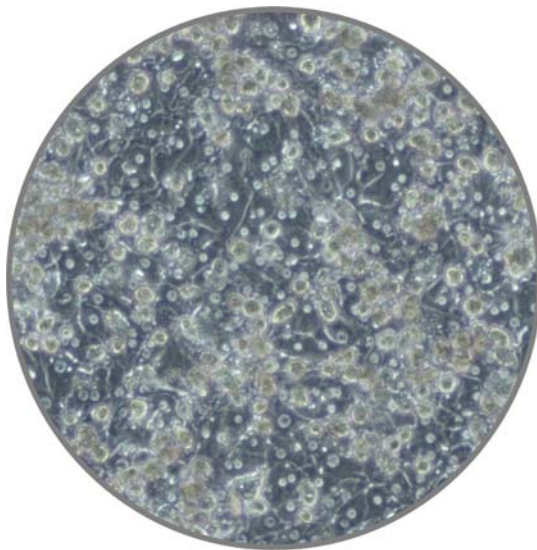
Additional donor demographic information, including relevant medical and medication history, is available upon request

Post-thaw Viability and Cell Quality Assessment			
Thawing Medium Used	Optimal Centrifuge Conditions	% Viability (post-thaw)	Viable cell yield per vial
MCHT50	100 g x 8 minutes	88%	9.7e6 x 10 <sup>6</sup>

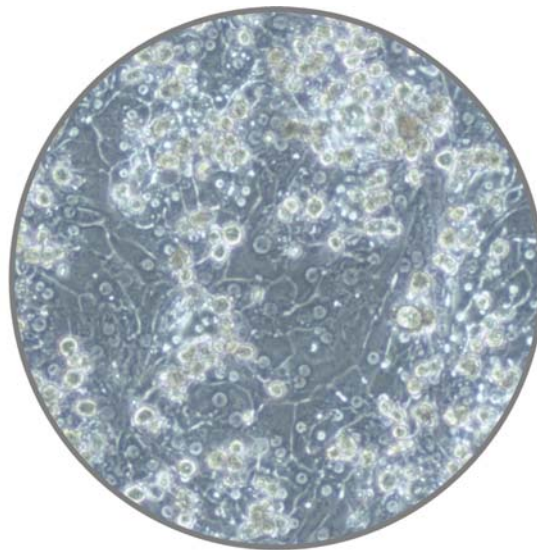
HepatoMeter report available upon request

Monolayer Assessment					
Plating Medium Used	Well Format	Culture Medium Used	Optimal Seeding Density	Initial Attachment Efficiency	Monolayer Confluency @96hrs
MP250	24 well	MM250	0.8x10 <sup>6</sup> /mL	100%	100%

Characterization was completed in a 24-well collagen-coated plate with extra-cellular matrix overlay



HUM4111B, 72hrs, 20X



HUM4111B, 96hrs, 20X

<i>Induction</i>			
Isoforms	Control Inducer	Fold Induction Specific Activity	Fold Induction mRNA Expression
<i>CYP1A2</i>	<i>50µM Omeprazole</i>	<i>35.8</i>	<i>17.8</i>
<i>CYP2B6</i>	<i>1mM Phenobarbital</i>	<i>20.0</i>	<i>16.6</i>
<i>CYP3A4</i>	<i>10µM Rifampicin</i>	<i>8.9</i>	<i>15.8</i>

Cryopressed human hepatocytes were thawed and plated on 24-well collagen I coated plates, overlaid with Matrigel<sup>®</sup>, then dosed in triplicate with vehicle control (0.1% DMSO) or control inducers for 72 hours. The fold induction was calculated by dividing the induced level by the vehicle control level.

Media products used for characterization:

MCHT50 - Cryopreserved human hepatocyte thawing medium, 50mL

MM250 - Hepatocyte maintenance medium, 250mL

MP250 - Human hepatocyte plating medium, 250mL

Contact customer service to place an order or to obtain additional information on any of our lots. This may include supplementary donor demographic information, current inventory, and photomicrographs at multiple timepoints and magnifications.

To contact TRL:

Main: 800-748-8979 or 919-549-3580

Sales: 919-549-3593

Email: [customerservice@trlcells.com](mailto:customerservice@trlcells.com)

Web: [www.triangleresearchlabs.com](http://www.triangleresearchlabs.com)