

Human Cryopreserved Hepatocytes
 Lot number: HUM4133
 Date: 11/02/15



Cryo Characterization Report (CCR)

Lot Overview	
Qualification	Catalog Number
<i>Cryopreserved human hepatocytes, Induction</i>	<i>HUCPI</i>

Storage Conditions: <150°C

Donor Demographics								
Sex	Race	Age	BMI	Tobacco Use	Alcohol Use	Drug Use	Serological Data	Cause of Death
<i>Female</i>	<i>Caucasian</i>	<i>45</i>	<i>20.76</i>	<i>No</i>	<i>Yes</i>	<i>No</i>	<i>Negative</i>	<i>Anoxia</i>

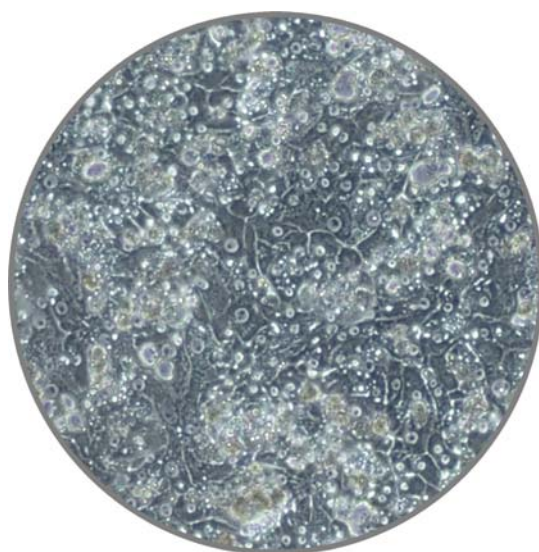
Additional donor demographic information, including relevant medical and medication history, is available upon request

Post-thaw Viability and Cell Quality Assessment			
Thawing Medium Used	Optimal Centrifuge Conditions	% Viability (post-thaw)	Viable cell yield per vial
<i>MCHT50</i>	<i>100 g x 8 minutes</i>	<i>91%</i>	<i>5.8 x 10⁶</i>

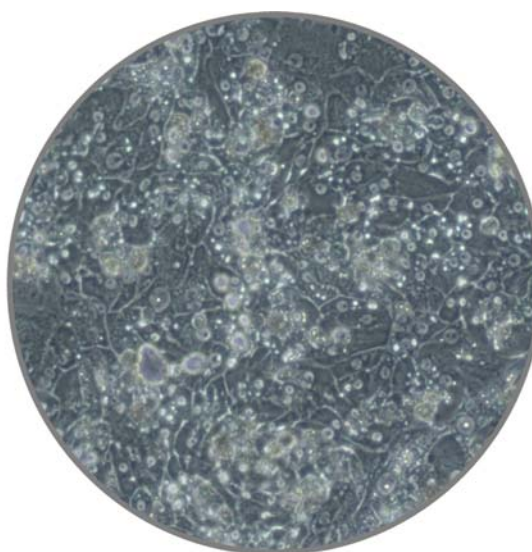
HepatoMeter report available upon request

Monolayer Assessment					
Plating Medium Used	Well Format	Culture Medium Used	Optimal Seeding Density	Initial Attachment Efficiency	Monolayer Confluency @96hrs
<i>MP250</i>	<i>24 well</i>	<i>MM250</i>	<i>0.8x10⁶/mL</i>	<i>90%</i>	<i>90%</i>

Characterization was completed in a 24-well collagen-coated plate with extra-cellular matrix overlay



HUM4133, 72hrs, 10X



HUM4133, 96hrs, 10X

<i>Induction</i>			
Isoforms	Control Inducer	Fold Induction Specific Activity	Fold Induction mRNA Expression
<i>CYP1A2</i>	<i>50µM Omeprazole</i>	<i>30.1</i>	<i>TBD</i>
<i>CYP2B6</i>	<i>1mM Phenobarbital</i>	<i>55.2</i>	<i>TBD</i>
<i>CYP3A4</i>	<i>10µM Rifampicin</i>	<i>18.9</i>	<i>TBD</i>

Cryopressed human hepatocytes were thawed and plated on 24-well collagen I coated plates, overlaid with Matrigel®, then dosed in triplicate with vehicle control (0.1% DMSO) or control inducers for 72 hours. The fold induction was calculated by dividing the induced level by the vehicle control level.

Media products used for characterization:

MCHT50 - Cryopreserved human hepatocyte thawing medium, 50mL

MM250 - Hepatocyte maintenance medium, 250mL

MP250 - Human hepatocyte plating medium, 250mL

Contact customer service to place an order or to obtain additional information on any of our lots. This may include supplementary donor demographic information, current inventory, and photomicrographs at multiple timepoints and magnifications.

To contact TRL:

Main: 800-748-8979 or 919-549-3580

Sales: 919-549-3593

Email: customerservice@trlcells.com

Web: www.triangleresearchlabs.com