

Human Cryopreserved Hepatocytes

Lot number: HUM4150

Date (D/M/Y): 20/06/2017



## Cryo Characterization Report (CCR)

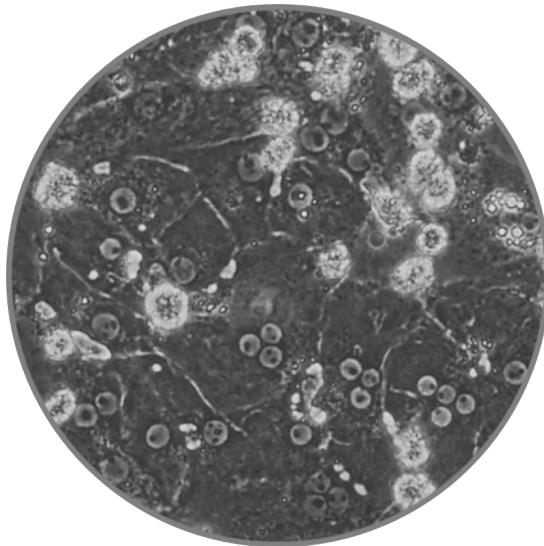
Lot Overview		
Qualification	Catalog Number	Manufacture Date (D/M/Y)
Cryopreserved human hepatocytes, General Plateable	HUCPG	10-10-2015

Storage Conditions: &lt;-150°C

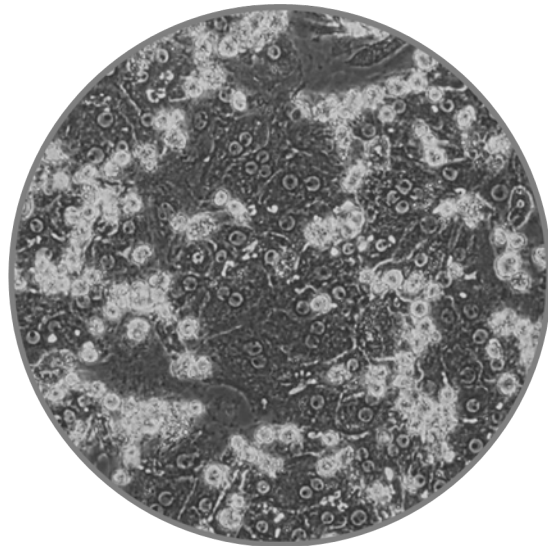
Donor Demographics								
Sex	Race	Age	BMI	Tobacco Use	Heavy Alcohol Use	Drug Use	Serological Data	Cause of Death
Male	Caucasian	5 yrs	14.2	No	No	No	Negative	Anoxia 2nd to CV

Additional donor demographic information, including relevant medical and medication history, is available upon request

Post-thaw Viability and Cell Quality Assessment			
Thawing Medium Used	Optimal Centrifuge Conditions	% Viability (post-thaw)	Viable cell yield per vial
MCHT50	100 g x 8 minutes	89	$5.0 \times 10^6$



HUM4150, 72hrs, 20X



HUM4150, 96hrs, 10X

Media products used for characterization:

MCHT50 - Cryopreserved human hepatocyte thawing medium, 50mL

MCHT50P - Cryopreserved pooled human hepatocyte thawing medium, 50mL

Contact customer service to place an order or to obtain additional information on any of our lots. This may include supplementary donor demographic information, current inventory, and photomicrographs at multiple timepoints and magnifications.

**To contact Lonza:**

Customer Service: +1 800-638-8174 | [order.us@lonza.com](mailto:order.us@lonza.com)

Scientific Support: +1 800-521-0390 | [scientific.support@lonza.com](mailto:scientific.support@lonza.com) | Web: [www.lonza.com](http://www.lonza.com)

EU/Row Scientific Support: +32 87 321 611 | [scientific.support.eu@lonza.com](mailto:scientific.support.eu@lonza.com);

[Lonza.com/TRLheps](http://Lonza.com/TRLheps)