

Human Cryopreserved Hepatocytes

Lot number: HUM4180

Date (D/M/Y): 06/06/2017

**LONZA**

Triangle Research Labs – Now Part of Lonza

## Cryo Characterization Report (CCR)

Lot Overview		
Qualification	Catalog Number	Manufacture Date (D/M/Y)
Cryo Human Hepatocytes, General Plateable	HUCPG	14-05-2016

Storage Conditions: &lt;-150°C

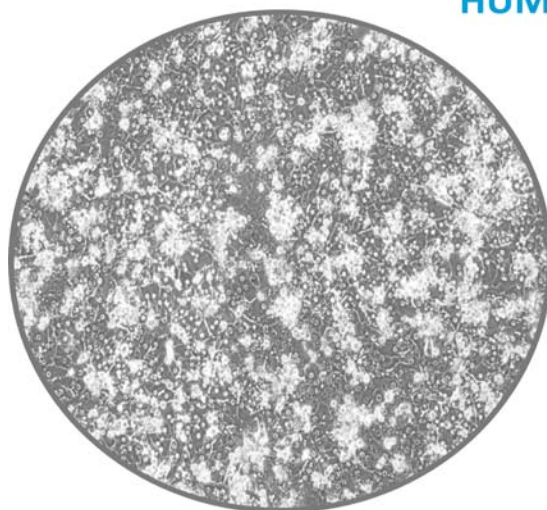
Donor Demographics								
Sex	Race	Age	BMI	Tobacco Use	Heavy Alcohol Use	Drug Use	Serological Data	Cause of Death
Male	Caucasian	7 yrs	14.6	No	No	No	Negative	Anoxia

Additional donor demographic information, including relevant medical and medication history, is available upon request

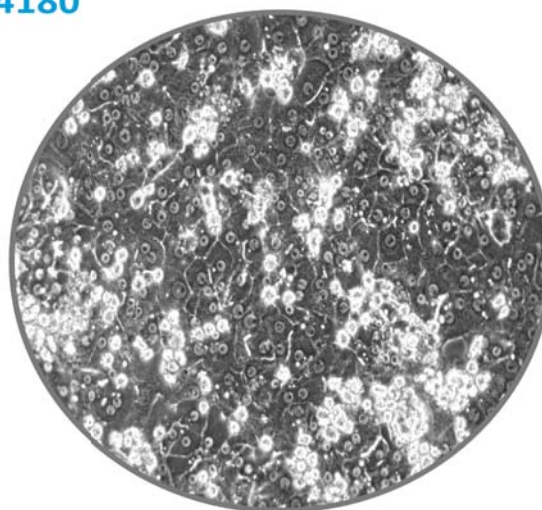
Post-thaw Viability and Cell Quality Assessment			
Thawing Medium Used	Optimal Centrifuge Conditions	% Viability (post-thaw)	Viable cell yield per vial
MCHT50	100 g x 8 minutes	88.7	8.5 x 10 <sup>6</sup>

Monolayer Assessment					
Plating Medium Used	Well Format	Culture Medium Used	Optimal Seeding Density	Initial Attachment Efficiency	Monolayer Confluency @ 96hrs
Hepatocyte Plating Medium (MP100)	24 well	Lonza HCM Medium(CC-3198)	0.8x10 <sup>6</sup> /mL		

Characterization was completed in a 24-well collagen-coated plate with extra-cellular matrix overlay

**HUM4180**

HUM4180, 72hrs, 10X



HUM4180, 48hrs, 20X

Media products used for characterization:

MCHT50 - Cryopreserved human hepatocyte thawing medium, 50mL

MCHT50P - Cryopreserved pooled human hepatocyte thawing medium, 50mL

Contact customer service to place an order or to obtain additional information on any of our lots. This may include supplementary donor demographic information, current inventory, and photomicrographs at multiple timepoints and magnifications.

**To contact Lonza:**

Customer Service: +1 800-638-8174 | [order.us@lonza.com](mailto:order.us@lonza.com)

Scientific Support: +1 800-521-0390 | [scientific.support@lonza.com](mailto:scientific.support@lonza.com) | Web: [www.lonza.com](http://www.lonza.com)

EU/Row Scientific Support: +32 87 321 611 | [scientific.support.eu@lonza.com](mailto:scientific.support.eu@lonza.com);

[Lonza.com/TRLheps](http://Lonza.com/TRLheps)