

Human Cryopreserved Hepatocytes

Lot number: HUM4211

Date (D/M/Y): 20/06/2017



## Cryo Characterization Report (CCR)

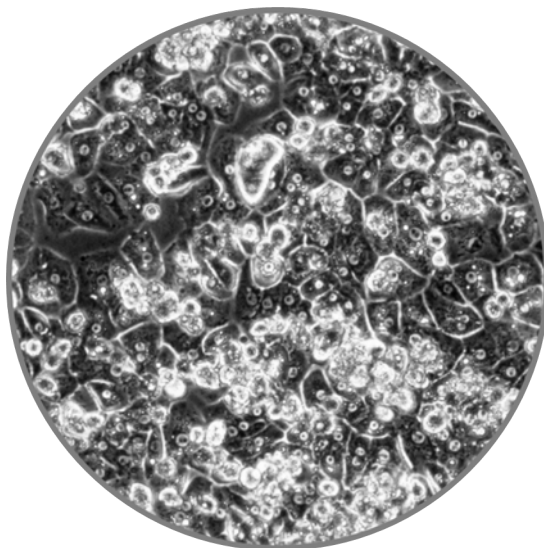
| Lot Overview  |                |                          |
|---|----------------|--------------------------|
| Qualification   | Catalog Number | Manufacture Date (D/M/Y) |
| Cryopreserved human hepatocytes,<br>General Plateable | HUCPG          | 15-12-2016               |

Storage Conditions: &lt;-150°C

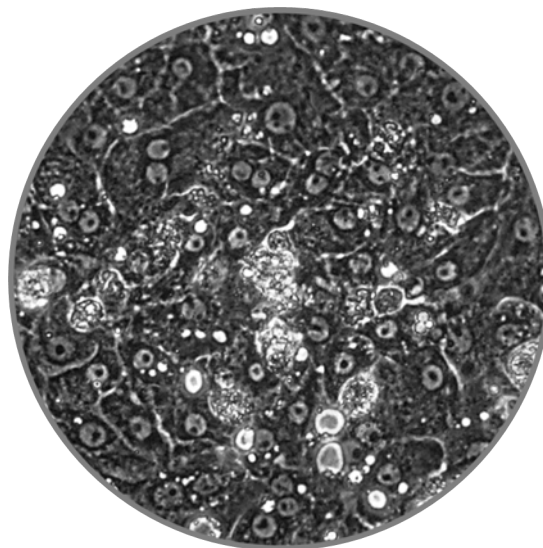
| Donor Demographics |           |        |      |             |                   |          |                  |                             |
|--------------------|-----------|--------|------|-------------|-------------------|----------|------------------|-----------------------------|
| Sex                | Race      | Age    | BMI  | Tobacco Use | Heavy Alcohol Use | Drug Use | Serological Data | Cause of Death              |
| Female             | Caucasian | 40 yrs | 27.5 | Yes         | No                | Yes      | Negative         | Anoxia due to Drug Overdose |

Additional donor demographic information, including relevant medical and medication history, is available upon request

| Post-thaw Viability and Cell Quality Assessment |                               |                         |                            |
|---|-------------------------------|-------------------------|----------------------------|
| Thawing Medium Used                             | Optimal Centrifuge Conditions | % Viability (post-thaw) | Viable cell yield per vial |
| MCHT50  | 100 g x 8 minutes             | 75.8                    | 6.04 x 10 <sup>6</sup>     |



HUM4211, 24hrs, 10X



HUM4211, 96hrs, 20X

Media products used for characterization:

MCHT50 - Cryopreserved human hepatocyte thawing medium, 50mL

MCHT50P - Cryopreserved pooled human hepatocyte thawing medium, 50mL

Contact customer service to place an order or to obtain additional information on any of our lots. This may include supplementary donor demographic information, current inventory, and photomicrographs at multiple timepoints and magnifications.

### To contact Lonza:

Customer Service: +1 800-638-8174 | [order.us@lonza.com](mailto:order.us@lonza.com)

Scientific Support: +1 800-521-0390 | [scientific.support@lonza.com](mailto:scientific.support@lonza.com) | Web: [www.lonza.com](http://www.lonza.com)

EU/Row Scientific Support: +32 87 321 611 | [scientific.support.eu@lonza.com](mailto:scientific.support.eu@lonza.com);

[Lonza.com/TRLheps](http://Lonza.com/TRLheps)