

Human Cryopreserved Hepatocytes
 Lot number: HUM4237
 Date (D/M/Y): 20/09/2017



LONZA

Triangle Research Labs – Now Part of Lonza

Cryo Characterization Report (CCR)

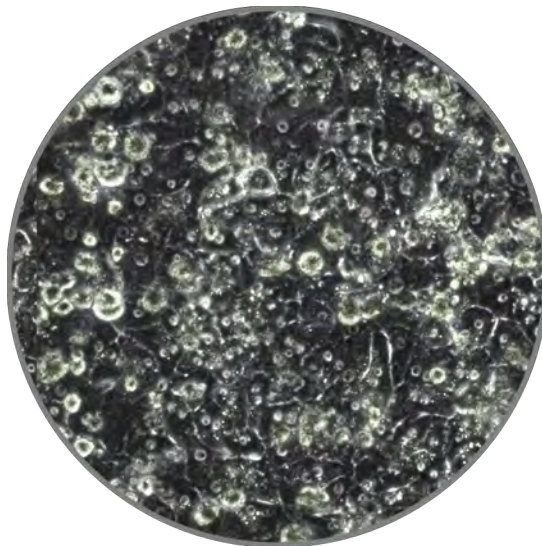
Lot Overview		
Qualification	Catalog Number	Manufacture Date (D/M/Y)
Cryopreserved human hepatocytes, Induction	HUCPI	02-05-2017

Storage Conditions: <-150°C

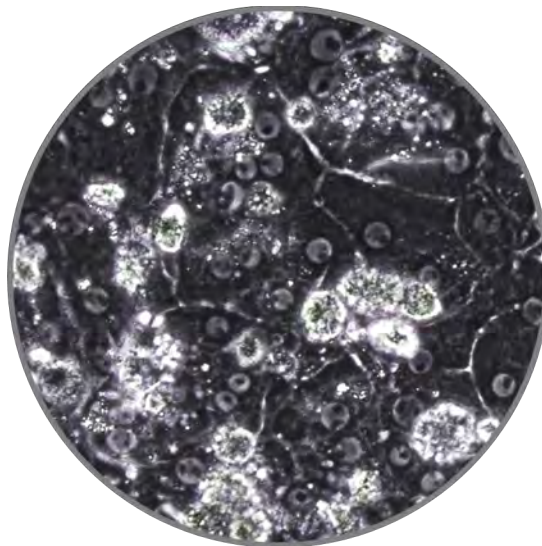
Donor Demographics								
Sex	Race	Age	BMI	Tobacco Use	Heavy Alcohol Use	Drug Use	Serological Data	Cause of Death
Female	Caucasian	25 yrs	25.8	No	No	Yes	Negative	Head Trauma (HVC)

Additional donor demographic information, including relevant medical and medication history, is available upon request

Post-thaw Viability and Cell Quality Assessment			
Thawing Medium Used	Optimal Centrifuge Conditions	% Viability (post-thaw)	Viable cell yield per vial
MCHT50	100 g x 8 minutes	83.6	12.14 x 10 ⁶



HUM4237, 24hrs, 10X



HUM4237, 96hrs, 20X

<i>Induction</i>				
Isoforms	Control Inducer	Fold Induction Specific Activity	Fold Induction mRNA Expression	Basal Induction (pmol/million cells/min)
<i>CYP1A2</i>	<i>50µM Omeprazole</i>	<i>21</i>	<i>N/A</i>	<i>2.4</i>
<i>CYP2B6</i>	<i>1mM Phenobarbital</i>	<i>26</i>	<i>N/A</i>	<i>1.1</i>
<i>CYP3A4</i>	<i>10µM Rifampicin</i>	<i>25</i>	<i>N/A</i>	<i>20.3</i>

Cryopreserved human hepatocytes were thawed and plated on 24-well collagen I coated plates, overlaid with Matrigel©, then dosed in triplicate with vehicle control (0.1% DMSO) or control inducers for 72 hours. The fold induction was calculated by dividing the induced level by the vehicle control level.

Media products used for characterization:

MCHT50 - Cryopreserved human hepatocyte thawing medium, 50mL

MCHT50P - Cryopreserved pooled human hepatocyte thawing medium, 50mL

Contact customer service to place an order or to obtain additional information on any of our lots. This may include supplementary donor demographic information, current inventory, and photomicrographs at multiple timepoints and magnifications.

To contact Lonza:

Customer Service: +1 800-638-8174 | order.us@lonza.com

Scientific Support: +1 800-521-0390 | scientific.support@lonza.com | Web: www.lonza.com

EU/Row Scientific Support: +32 87 321 611 | scientific.support.eu@lonza.com;

Lonza.com/TRLheps