

Cryopreserved Rat (Wistar Han) Hepatocytes - Suspension



Catalog Number: RWCS01

Lot number: RWH140

Date: 04/11/16

FOR RESEARCH USE ONLY. CAUTION: Not intended for diagnostic or therapeutic use. Treat all animal derived products as potentially pathogenic. Wear personal protective equipment and practice appropriate laboratory and disposal techniques for potentially pathogenic or bio-hazardous material.

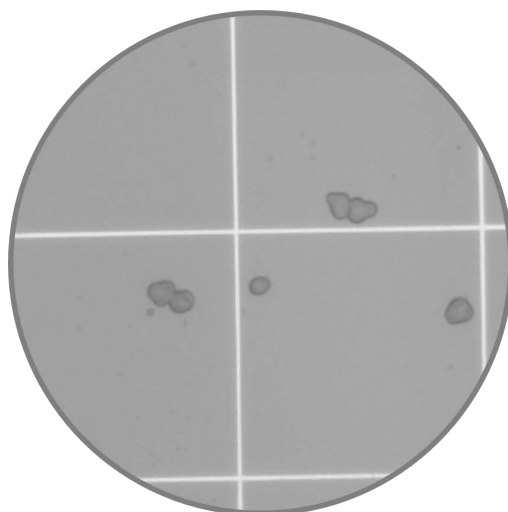
<i>Donor Demographics</i>			
Species	Strain	Sex	Age
<i>Rat</i>	<i>Wistar Han</i>	<i>Male</i>	<i>10 weeks</i>

Storage Conditions: <-150°C

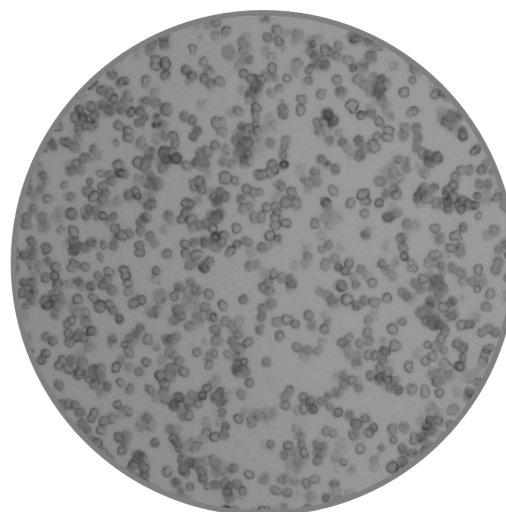
<i>Post-thaw Viability and Cell Quality Assessment</i>			
Thawing Medium Used	Optimal Centrifuge Conditions	% Viability	Viable cell yield per vial
<i>MCRT50</i>	<i>100g x 10min</i>	<i>90%</i>	<i>6.8 x 10⁶</i>

<i>Suspension Metabolism</i>			
Isoform	Substrate	Marker Metabolite/ *Substrate Clearance	Activity (pmol/min/10 ⁶ cells)
<i>General</i>	<i>100 uM 7-Ethoxycoumarin</i>	<i>7-Ethoxycoumarin Clearance*</i>	<i>N/A</i>
<i>General</i>	<i>100 μM 7-Ethoxycoumarin</i>	<i>7-Hydroxycoumarin</i>	<i>14.3</i>
<i>SULT</i>	<i>100 uM 7-Hydroxycoumarin</i>	<i>7-Hydroxycoumarin Sulfate</i>	<i>301.2</i>
<i>UGT</i>	<i>100 uM 7-Hydroxycoumarin</i>	<i>7-Hydroxycoumarin Glucuronide</i>	<i>959.7</i>

All incubations were concluded at 30 minutes



RWH140, Post-thaw, 10X



RWH140, Post-thaw, 10X

To place an order or inquire about our products and services, contact us by phone: 919.549.3593 or Email: customerservice@trlcells.com; or visit us on the web at www.trianglresearchlabs.com.

Triangle Research Labs ▲ 6 Davis Drive, Research Triangle Park, NC 27709 ▲ 1.919.549.3593